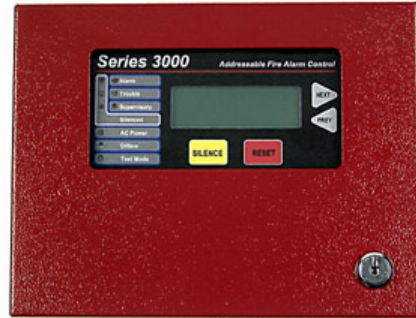


Product Description

The SAFETECH™ RDA (Remote Display Annunciator) is a Series 3000 network device which provides a Remote display capability for a Series 3000 fire alarm control panel system. The RDA features:

- ◆ An attractive and durable metal enclosure
- ◆ An 80-character LCD (4 lines of 20 characters each)
- ◆ Nine color-coded LEDs
- ◆ A 16-key keypad, with full-color overlay
- ◆ A beeper, for audible annunciation of system status



The RDA mimics the host control panel's LCD, LEDs, and beeper, so that the host panel's status may be viewed at a remote location. In addition, the system may be silenced and reset from the RDA. The system may not be otherwise programmed or controlled from an RDA.

The RDA is powered from the host panel, and thus needs no local power for operation. This also means that the RDA is battery-backed (through the host panel) and will remain operational if AC power is lost.

Specifications

Dimensions of enclosure: 9" x 7" x 2"
(Enclosure includes knockouts on bottom and right side, mounting holes on the back, and a keylock.)

Electrical Specifications:

Input Power:	24VDC nominal
Standby Current:	0.045A
Maximum Alarm Current:	0.060A
Maximum Total Line Capacitance for communication:	0.3 μF
Maximum Total Line Resistance for power and communications:	50 Ohms

Pin-out of TB1

